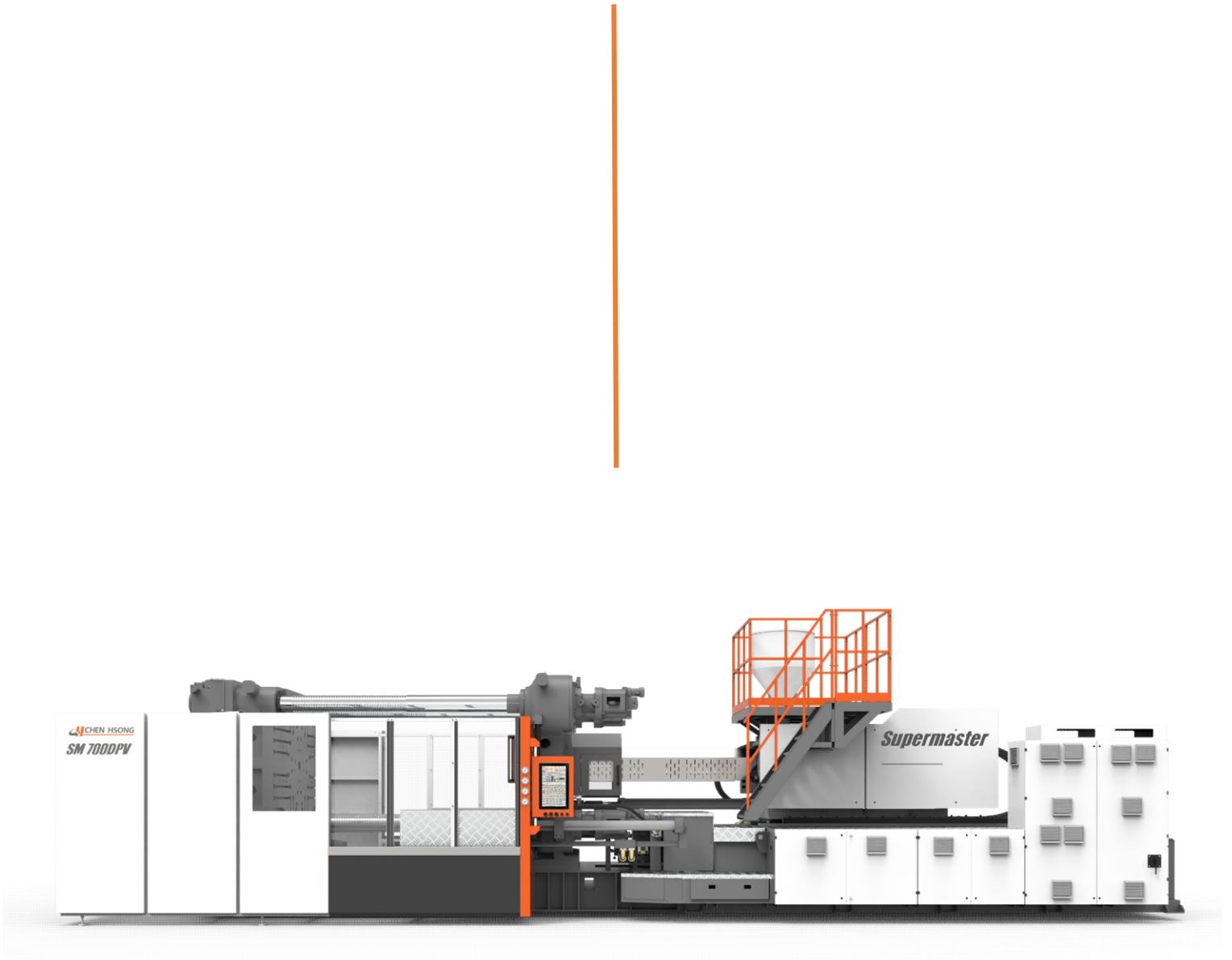




# SM-DPV Series

Redefining Performance and Value for the Plastics Industry



**Two Platen Advance Servo Drive Injection Molding Machines**

SM700DPV to SM6500DPV

(772 to 7165 US Tons)

# SM DPV Specifications

		SM700DPV		SM850DPV		SM1050DPV		SM1250DPV		SM1450DPV		SM1650DPV		SM1900DPV		SM2200DPV		SM2600DPV		SM3000DPV		SM3600DPV		SM4500DPV		SM6500DVP				
STANDARD INJECTION UNIT		J1	J2	K1	K2	N1	N2	P1	P2	Q1	Q2	A1	A2	R1	R2	R1	R2	B1	B2	C1	C2	D1	D2	E1	E2	G1	G2	H1		
Screw Diameter	inches	3.26	3.54	3.54	3.85	3.85	4.33	4.33	4.72	4.72	5.11	5.11	5.51	5.51	5.9	5.9	5.51	5.9	5.9	6.88	6.88	7.87	7.87	8.85	8.85	9.84	9.84	10.82	11.81	11.81
	mm	83	90	90	98	98	110	110	120	120	130	130	140	140	150	150	140	150	150	175	175	200	200	225	225	250	250	275	300	300
Screw L/D ratio	L/D	22	20.3	22	20.2	22	19.6	22	20.2	22	20.3	22	20.4	22	20.5	22	20.5	22	18.9	22	19.3	22	19.6	22	19.8	22	20.2	22		
Shot volume	In <sup>3</sup>	131.99	155.18	174.58	207.05	230.05	289.8	318.78	379.38	413.86	485.75	526.2	610.29	657.2	754.49	657.2	754.49	883.8	1202.96	1408.36	1839.49	2107.76	2667.65	3007.12	3712.56	5434.04	6466.99	7113.72		
Shot size (PS)	ounces	69.42	81.62	91.85	108.89	120.98	152.45	167.69	199.58	217.71	255.52	276.79	321.02	345.72	396.86	345.72	396.86	464.91	632.78	740.82	967.6	1108.69	1403.19	1581.79	1952.83	2858.39	3401.71	3812.44		
	grams	1968	2314	2604	3087	3430	4322	4754	5658	6172	7244	7647	9101	9801	11251	9801	11251	13180	17939	21002	27431	31431	39780	44843	55362	81034	96437	106081		
Injection Pressure (max)	PSI	27122	23061	26686	22480	26686	21175	26686	22480	26686	22770	26106	22480	26106	22770	26106	22770	26106	19144	23206	17839	23206	18274	23206	18854	23206	19435	23206		
Injection Rate	In <sup>3</sup> /sec	34.17	40.15	39.66	47.04	43.93	55.34	50.34	59.92	58.09	68.16	69.32	80.36	79.08	90.8	79.08	90.8	79.08	107.64	120.21	142.73	129.49	163.9	166.1	205.04	199.42	237.32	153.59		
Screw Stroke	inches	15.74		17.71		19.68		21.65		23.62		25.59		27.56		27.56		32.28		37.79		43.3		48.81		59.05		64.96		
	mm	400		450		500		550		600		650		700		700		820		960		1100		1240		1500		1650		
Screw Rotation Speed (max)	RPM	150		140		130		115		110		100		95		95		95		83		65		60		50		40		
Nozzle Forward Force (max)	US-tons	16.53		16.53		16.53		16.53		16.53		16.53		16.53		16.53		16.53		16.53		16.53		16.53		16.53		16.53		
<b>CLAMPING UNIT</b>																														
Clamping Force	US-tons	772		937		1158		1378		1598		1819		2094		2425		2866		3307		3968		4960		7165				
Opening Stroke	inches	47.24-74.80		49.21-78.74		51.18-82.67		59.05-90.55		64.96-96.45		66.92-98.42		66.92-98.42		70.86-98.42		74.80-102.36		82.67-118.11		86.61-125.98		90.55-133.85		106.29-153.54				
	mm	1200-1900		1250-2000		1300-2100		1500-2300		1650-2450		1700-2500		1700-2500		1600-2500		1900-2800		2100-3000		2200-3200		2300-3400		2700-3900				
Space Between Tie Bars	inches	40.15x40.15		46.06x46.06		50.39x50.39		54.33x50.39		57.87x53.93		61.81x57.87		65.74x61.02		71.65x59.84		75.98x68.11		79.52x71.65		85.43x75.59		95.67x82.67		108.66x94.48				
	mm	1020x1020		1170x1170		1280x1280		1380x1280		1470x1370		1570x1470		1670x1550		1820x1520		1930x1730		2020x1820		2170x1920		2430x2100		2760x2400				
Platen Size	inches	59.05x59.05		66.14x66.14		70.86x70.86		76.77x74.8		78.74x78.74		85.03x83.46		90.55x88.97		94.98x90.55		106.29x102.36		110.23x108.66		118.11x114.17		129.92x123.22		149.6x142.91				
	mm	1500x1500		1680x1680		1800x1800		1950x1900		2000x2000		2160x2120		2300x2260		2400x2300		2700x2600		2800x2760		3000x2900		3300x3100		3800x3630				
Mold Height (min-max)	inches	15.74-43.3		17.71-47.24		19.68-51.18		19.68-51.18		21.65-53.15		23.62-55.11		27.55-59.05		27.55-62.99		31.49-66.92		35.43-70.86		39.37-78.74		43.3-86.61		51.18-98.42				
	mm	400-1100		450-1200		500-1300		500-1300		550-1350		600-1400		700-1500		700-1600		800-1700		900-1800		1000-2000		1100-2200		1300-2500				
Maximum Daylight	inches	90.55		96.45		102.36		110.23		118.11		122.04		125.98		125.98		141.7		153.54		165.35		177.16		204.72				
	mm	2300		2450		2600		2800		3000		3100		3200		3200		3600		3900		4200		4500		5200				
Ejector Force	US-Tons	11.02		11.81		13.78		15.74		15.74		15.74		17.71		17.71		19.68		19.68		21.65		21.65		25.59				
Ejector Stroke	inches	11.02		11.81		13.78		15.74		15.74		15.74		17.71		17.71		19.68		19.68		21.65		21.65		25.59				
	mm	280		300		350		400		400		400		450		450		500		500		550		550		650				
Mold Register Hole	inches	9.84		9.84		9.84		9.84		9.84		12.4		12.4		12.4		12.4		12.4		12.4		12.4		12.4				
	mm	250		250		250		250		250		315		315		315		315		315		315		315		315				
<b>POWER PACK</b>																														
System Pressure	PSI	2538		2538		2538		2538		2538		2538		2538		2538		2538		2538		2538		2538		2538				
Motor Power	KW (HP)	75 (102)		85 (115.5)		93 (126.4)		104.5 (142)		124.5 (169.3)		142.5 (193.7)		159.5 (216.9)		159.5 (216.9)		159.5 (216.9)		195 (265.1)		240 (326.3)		285 (387.5)		520 (707)		600 (815.7)		
Electric Heating Power	KW	38		42		48		50		70		80		95		95		100		130		175		220		330		390		
Temperature Control Zones		7+1		7+1		7+1		7+1		7+1		7+1		7+1		7+1		7+1		7+1		7+1		7+1		7+1		7+1		
<b>Miscellaneous</b>																														
Machine Dimensions (LxWxH)	inches	362x114x99		382x122x107		397x130x110		441x138x118		480x148x124		484x149x130		508x166x138		508x166x138		535x174x146		595x197x158		650x209x166		733x233x174		925x252x189				
	meters	9.2x2.9x2.5		9.7x3.1x2.7		10.1x3.3x2.8		11.2x3.5x3		12.2x3.75x3.15		12.3x3.8x3.3		12.9x4.2x3.5		12.9x4.2x3.5		13.6x4.4x3.7		15.1x5x4		16.5x5.3x4.2		18.6x5.9x4.4		23.5x6.4x4.8				
Oil tank Capacity	gallon	436		457		476		608		635		740		912		912		1070		1163		1572		1955		3078				
Machine Weight (Approximate)	lbs	61730		83780		103620		121250		138890		165350		180780		191800		242510		297620		374790		462970		628320				

## Standard Features:

- Energy Saving Precision Servo Pumps
- 4 Core Pull & 4 Air Blow Circuits
- High Torque Screw Drive
- Multiple Ejector Control
- Electrical, Mechanical and Hydraulic Safeties
- Programmable Input & Outputs
- Spare Parts Kit— Spare Heater Bands, Filters and Mold Clamps
- 2-Year Limited Factory Warranty—Parts & Labor
- 3-Year Limited Warranty on Frames & Castings
- Powerful B&R Touchscreen Controller
- Precise Barrel and Nozzle Temperature Control
- Water Flow Meters
- SPI-ANI 146 (E67) Robot Interface
- SPI Standards
- CE Declaration

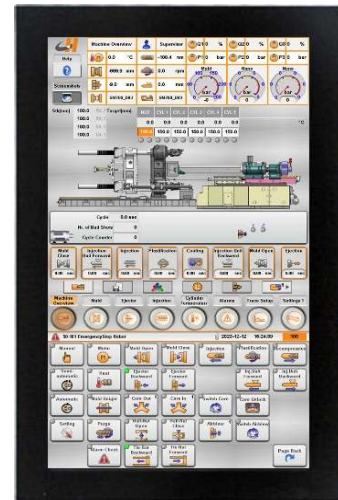
## Available Options:

- Special Screw and Barrel Designs—High Mixing, Rigid PVC, PET, PMMA, Reinforced Nylon and more
- Injection Units listed are standard, shot sizes from 69.4 to 3,742 ounces available
- Additional Core Pull and Air Blast Circuits including special programming
- Recovery on the Fly with optional Electric E-Drive
- Electric Screw Drive and Shut off Nozzle
- Integrated Valve Gate & Hot Runner Controls
- High Heat Packages

## Precision Control

### B&R PPC2100

- 18.5" High resolution touchscreen
- High speed CPU
- Ethernet and power link capable
- Increased precision using self adapting software
- More flexibility for programming operational sequences
- Integrated with latest safety regulations



## Offices :

### Headquarters

CH-America  
151 Ella Grasso Avenue  
Torrington, CT 06790

### Midwest Sales & Service

CH-America  
42471 Garfield Road  
Clinton Township, MI 48038

*For Sales and Service in the USA and Canada*